

## The Digestive System: Anatomy Review

1. List two main divisions of the digestive system.

a. \_\_\_\_\_

b. \_\_\_\_\_

2. The four main layers of the digestive tract wall are

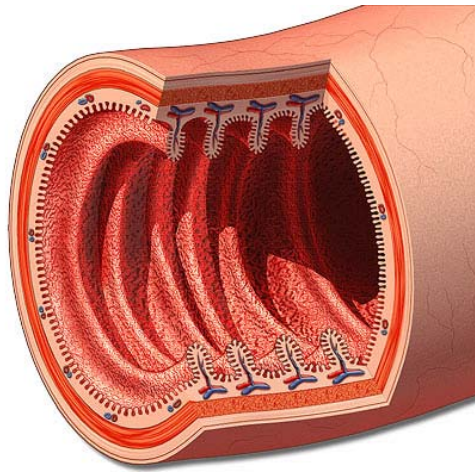
a. \_\_\_\_\_

b. \_\_\_\_\_

c. \_\_\_\_\_

d. \_\_\_\_\_

3. Label the diagram below with the four main layers you listed in question 6.



4. The mucosa includes a type of columnar \_\_\_\_\_ that forms the inner lining of the lumen

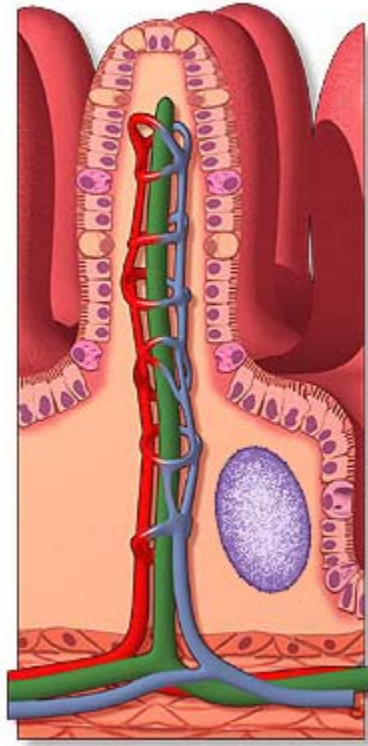
5. Blood and lymph vessels of the mucosa are found in its \_\_\_\_\_ connective tissue layer.

6. The function of epithelial goblet cells is to secrete \_\_\_\_\_.

7. \_\_\_\_\_ cells of the mucosa secrete hormones into the blood.

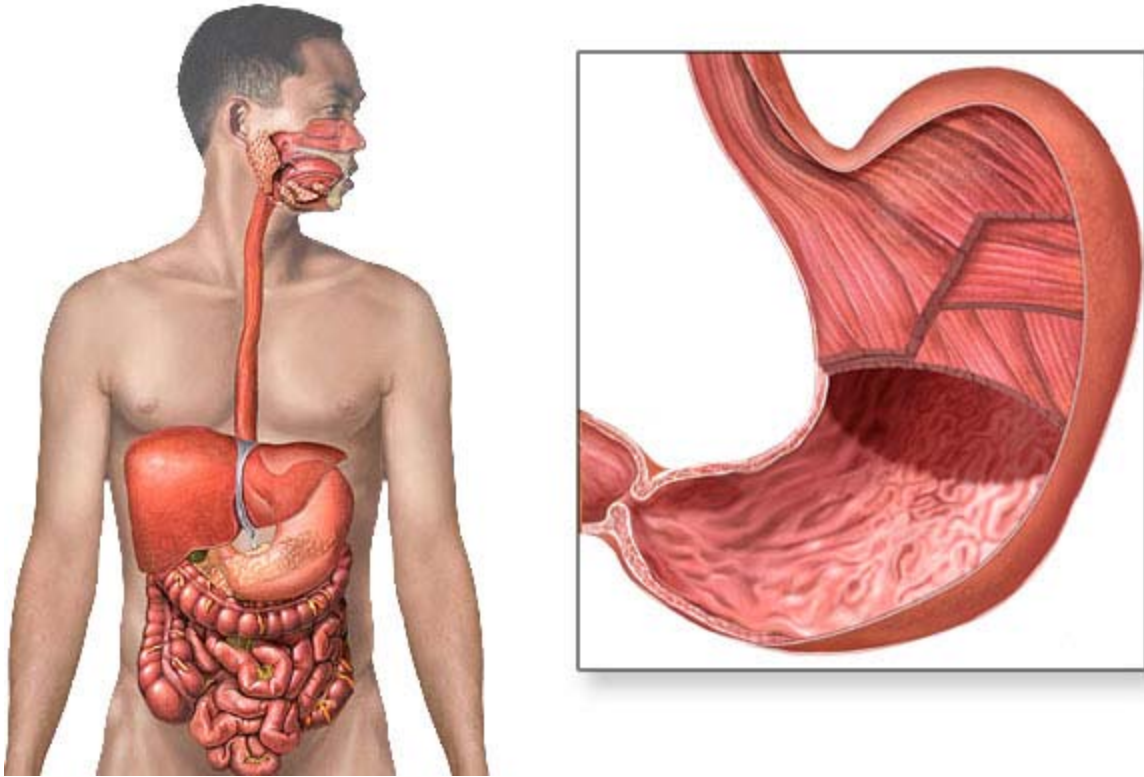
8. Absorption of nutrients occurs through the mucosal epithelium and into either \_\_\_\_\_ or \_\_\_\_\_ vessels.

9. Using the following diagram, label the vessels you listed in the previous question.



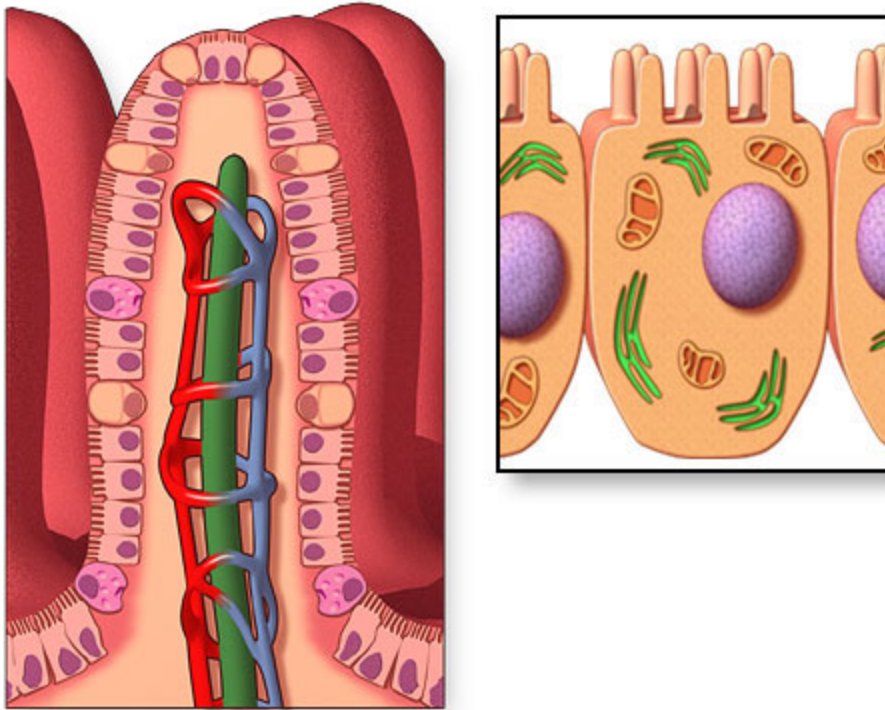
10. The built-in (intrinsic) network of nerve cells in the submucosa is the \_\_\_\_\_.
11. The two types of movements produced by contractions of the muscularis externa are \_\_\_\_\_ and \_\_\_\_\_.
12. List the four regions of the stomach:
- \_\_\_\_\_
  - \_\_\_\_\_
  - \_\_\_\_\_
  - \_\_\_\_\_
13. List the three sheets of muscle in the stomach's muscularis externa:
- \_\_\_\_\_
  - \_\_\_\_\_
  - \_\_\_\_\_

14. Label the three sheets of muscle in the stomach's muscularis externa in the diagram below.

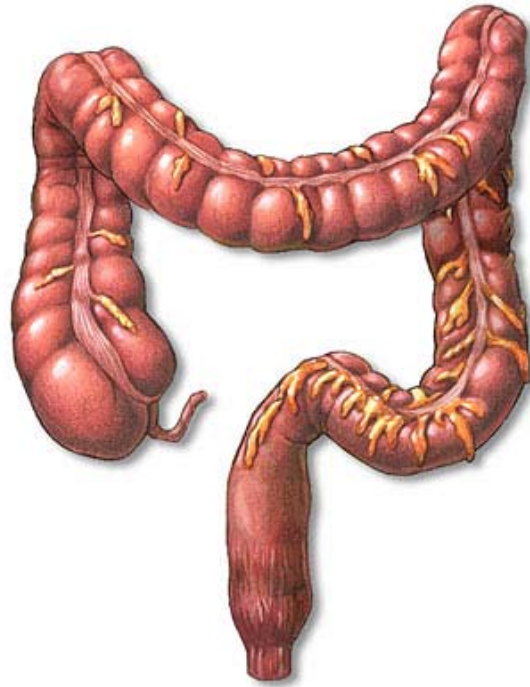


15. List, in order from the pylorus to the colon, the three regions of the small intestine:
- a. \_\_\_\_\_
  - b. \_\_\_\_\_
  - c. \_\_\_\_\_
16. From largest to smallest, list the three modifications of the small intestine's inner wall that function to increase surface area:
- a. \_\_\_\_\_
  - b. \_\_\_\_\_
  - c. \_\_\_\_\_

17. Label two of the modifications of the intestine to increase surface area in the diagram below.



18. The microvilli of the small intestine's epithelial cells form the \_\_\_\_\_ border.
19. Starting from the ileocecal valve, trace the path of undigested material through the large intestine.



20. List the six sphincters of the digestive tract:
- a. \_\_\_\_\_
  - b. \_\_\_\_\_
  - c. \_\_\_\_\_
  - d. \_\_\_\_\_
  - e. \_\_\_\_\_
21. The single digestive function of the liver is to produce \_\_\_\_\_.
22. The main digestive enzyme-producing organ in the body is the \_\_\_\_\_.
23. Three pairs of \_\_\_\_\_ function to moisten food in the mouth.